

# Special Status Animals and Plants Addressed By the HMP

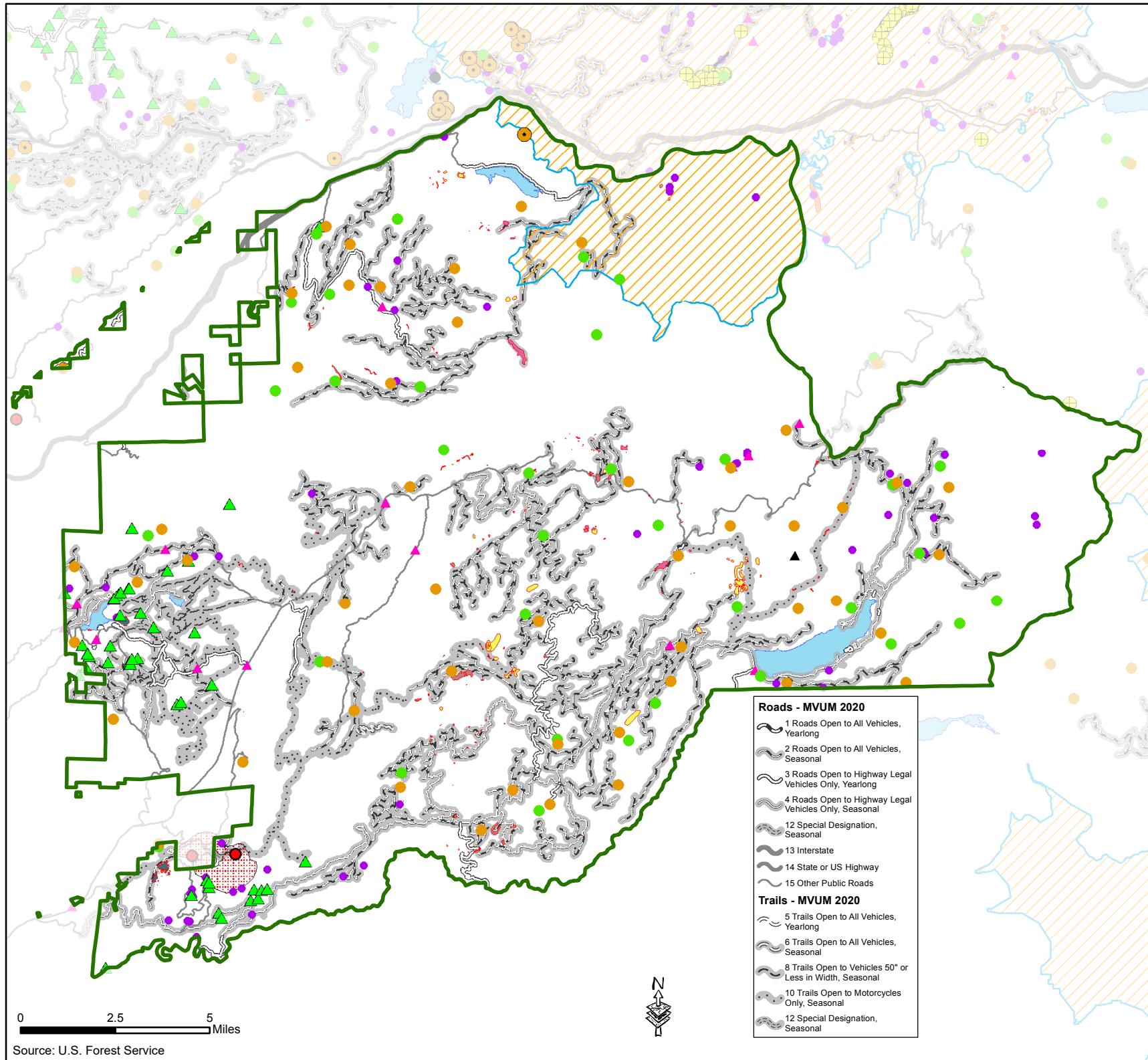
*Ranger District 1*

**Wildlife**

- California spotted owl activity center
- ▲ Greater sandhill crane
- Northern goshawk activity center
- ▲ Mule deer
- California red-legged frog (CRLF)
- CRLF designated critical habitat
- ▲ Foothill yellow-legged frog
- Sierra Nevada yellow-legged frog designated critical habitat
- Sierran treefrog
- Western pond turtle

**Plants**

- Arctostaphylos nisseniana*
- Botrychium ascendens*
- Botrychium crenulatum*
- Botrychium lunaria*
- Botrychium minganense*
- Bruchia bolanderi*
- Cypripedium fasciculatum*
- Erigeron miser*
- Fritillaria eastwoodiae*
- Ivesia aperta* var. *aperta*
- Ivesia sericoleuca*
- Lewisia kelloggii* ssp. *hutchisonii*
- Lewisia kelloggii* ssp. *kelloggii*
- Meesia uliginosa*
- Packera layneae*
- Peltigera gowardii*
- Phacelia stebbinsii*
- Poa sierrae*
- Pyrocoma lucida*



**Roads - MVUM 2020**

- 1 Roads Open to All Vehicles, Yearlong
- 2 Roads Open to All Vehicles, Seasonal
- 3 Roads Open to Highway Legal Vehicles Only, Yearlong
- 4 Roads Open to Highway Legal Vehicles Only, Seasonal
- 12 Special Designation, Seasonal
- 13 Interstate
- 14 State or US Highway
- 15 Other Public Roads

**Trails - MVUM 2020**

- 5 Trails Open to All Vehicles, Yearlong
- 6 Trails Open to All Vehicles, Seasonal
- 8 Trails Open to Vehicles 50" or Less in Width, Seasonal
- 10 Trails Open to Motorcycles Only, Seasonal
- 12 Special Designation, Seasonal

Source: U.S. Forest Service